



JOBSITE SAFETY PROTOCOLS

COVID-RELATED WORK PROCEDURES

MAY 2020

**DELAWARE
NEW JERSEY
PENNSYLVANIA
MARYLAND**

Table of Contents:

- I. What is COVID-19 and how does it spread?
- II. How can you Help Keep Safety a Priority?
- III. Bancroft Project Site Protocols
- IV. State Specific Protocols
- V. Resources & Links

Bancroft Resources / Points of Contact:

Dave Hatfield
Safety Manager
Wilmington DE Office
(302) 420-3798
dhatfield@bancroftusa.com

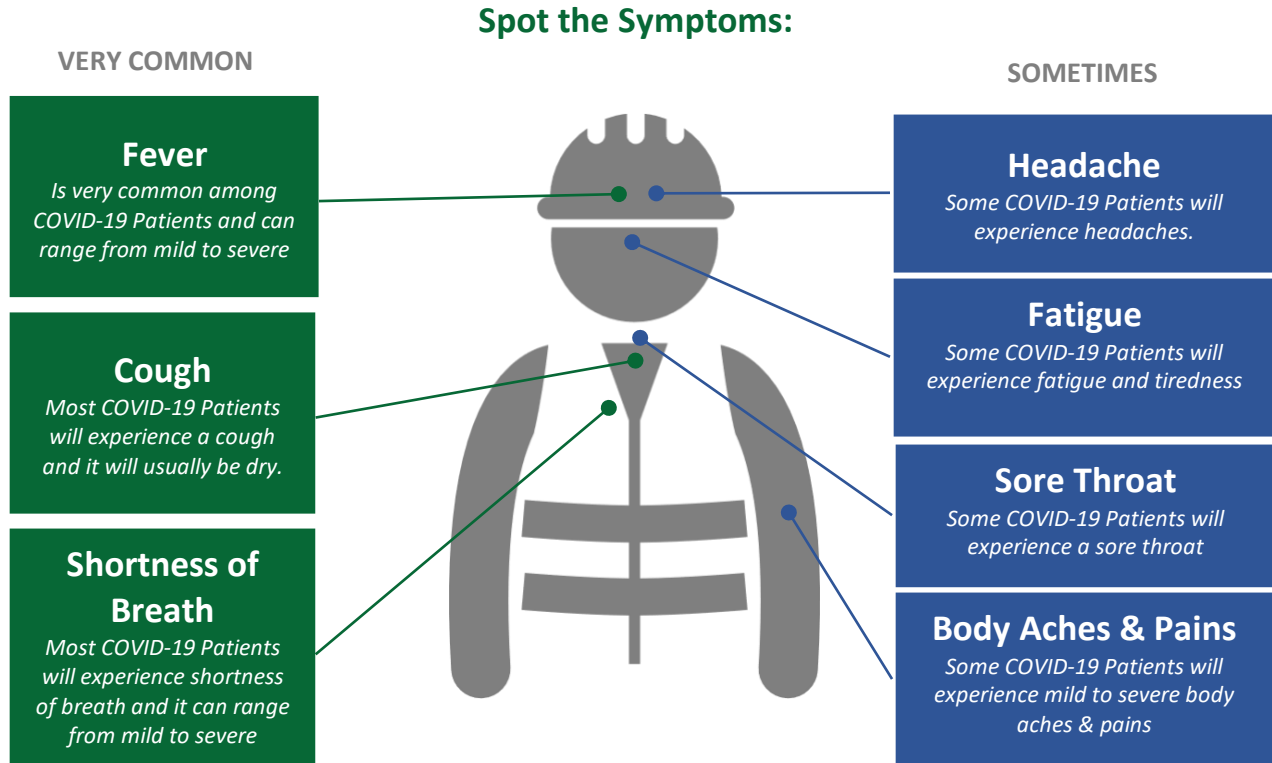
John Patti
Safety Manager
Princeton NJ Office
(609) 319-2398
jpatti@bancroftusa.com

Larry Carroll
Field Operations Manager
(302) 299-9867
lcarroll@bancroftusa.com

What is COVID-19?

Coronavirus (COVID-19) is an illness caused by a virus that can spread from person to person. The virus that causes COVID-19 is a new coronavirus that has spread throughout the world.

COVID-19 symptoms can range from mild (or no symptoms) to severe illness.



Emergency Warning Signs **Requires Immediate Medical Treatment**



Difficulty Breathing



Persistent Chest Pain



New Confusion



Blueish Lips/Face

On average it takes 5–6 days from when someone is infected with the virus for symptoms to show, however it can take up to 14 days.

PLEASE NOTE – THE ABOVE-REFERENCED LIST MAY CHANGE AS NEW INFORMATION IS PROVIDED BY THE CDC.

How does COVID-19 spread?

You can become infected by coming into close contact (about 6 feet or two arm lengths) with a person who has COVID-19.

COVID-19 is primarily spread from person to person.

You can become infected from respiratory droplets when an infected person coughs, sneezes, or talks.

You may also be able to get it by touching a surface or object that has the virus on it, and then by touching your mouth, nose, or eyes.

How Can you Help Keep Safety a Priority?

As the Construction Manager, Bancroft must ensure that the safety of all trade partners & stakeholders associated with our project sites is the #1 Priority. In order to ensure this, **we need 100% support and cooperation from all trade partners, at all times.**

All Bancroft Team Members and Subcontractors will complete a daily disclosure form on their health risk assessment. Anyone whose disclosure form indicates a possibility of illness and/or exposure will be asked to leave the job site.

Quick reminders of how you can help protect yourself and your colleagues on your project sites:

- 1) Stay home if not feeling well.
- 2) Wash your hands for 20 seconds when you arrive and repeatedly throughout the day.
- 3) Cough and sneeze into your elbow.
- 4) Plan work activities to maintain a 6-foot distance between you and others.
- 5) Only one person is permitted in a vehicle at a time and employees may only operate or enter their assigned vehicle or equipment.
- 6) Upon arriving at or re-entering the jobsite, all personnel must wash their hands and disinfect any surfaces they may touch on or in their assigned company vehicle (door handles, gear shift, steering wheel, etc.)
- 7) Avoid leaving and returning to the jobsite during the scheduled work shift.
- 8) Use designated access locations into the facilities.

Bancroft Project Site Protocols


Bancroft Teams, Subcontractors, All Other External Stakeholders

This summary is intended for Project Teams and the Subcontractors to understand Bancroft's expectations while working on site. Specifics may vary dependent on Clients, Project Type, and State the Project is being built. You are required to follow all CDC guidelines and recommendations for social distancing. If you need additional clarification, please contact your Supervisor.

1. All Bancroft Team Members and Subcontractors will complete a daily disclosure form (*See Page 6*) on their health risk assessment. Anyone whose disclosure form indicates a possibility of illness and/or exposure will be asked to leave the job site.
2. Do not come to work if you are not feeling 100% or have close contact with someone that has exhibited the symptoms of the virus within the last 72 hours (3 full days of no fever without the use of medicine that reduces fever). Primary symptoms are a cough, fever (99.5°F or higher), shortness of breath, fatigue, body aches, runny/stuffy nose, chills, or sore throat.
3. No outside personnel allowed on the job site unless they are providing essential services.
4. You must wear gloves (e.g., work, latex, disposable) and appropriate PPE while working on the project site and ensure PPE is disposed of properly.
5. Bancroft will do everything we can to provide hand sanitation methods based on available supply (i.e., hand sanitizer, alcohol-based hand rubs, handwashing stations). All workers must wash their hands for at least 20 seconds with warm soap and water or an alcohol-based hand sanitizer that contains at least 60% alcohol. Hands must be washed when entering and leaving the job site, before and after breaks, after glove removal, etc. Subcontractors are asked to provide ample hand sanitizers for their workers to ensure there is an adequate supply on the project site.
6. No food or drinks (other than water) allowed on the job site. Do not use a common water cooler or other communal beverage (e.g., coffee) dispenser.

7. Breaks must be taken in each worker's personal vehicle if able. Alternatives that provide appropriate social distancing outside of the job site are acceptable if vehicles aren't accessible. Do not congregate in lunch areas, trailers, conference rooms, etc.
8. Social distancing of greater than 6 feet must occur as much as possible during work. If you need to partner with someone/others and perform work in closer proximity than 6 feet, you must follow proper OSHA/CDC Guidelines and use cloth/disposable mask covering and also plastic shield. When activity is complete follow proper hand sanitation protocol (#5 above), properly dispose of used mask, sanitize/clean face shield and comply with the appropriate CDC guidelines to the best of your ability.
9. Restrict on-site job meetings and facilitate as many of these as possible over the phone or other means of available technology. If you must meet in person, you must comply with the CDC social distancing guidelines (6 feet or more) and utilize hand sanitation methods (#5 above).
10. No sharing of hand tools or PPE.
11. Bancroft is increasing the frequency of job site port-a-jon cleaning and interior supplies are adequately stocked.

Bancroft Site Protocols – Daily Job Site Disclosure Form:



Job Site/Crew Certification
(Subcontractors/any company on-site)

Project Name _____

I, _____, representing _____
Company representative *Company name*

Job Site Questionnaire

1. In the past 72 hours, have you or anyone in your household experienced symptoms of acute respiratory illness, such as: fever of 99.5°F or higher, fatigue, body aches, cough, shortness of breath, sore throat, runny/stuffy nose, chills?

YES _____ NO _____

2. In the past 14 days, have you had close contact (i.e., within 6 feet for more than a few minutes) with anyone who tested positive for COVID-19 (AKA coronavirus), is in the process of being tested for COVID-19, is isolating as a result of a suspected COVID-19 infection, or is experiencing acute symptoms of COVID-19?

YES _____ NO _____

3. In the past 14 days, have you traveled anywhere that is under a travel advisory or had close contact with anyone who has traveled to a location that is under a travel advisory?

YES _____ NO _____

*Employees of critical infrastructure, which includes construction, are exempt from the CDC Travel Advisory for New York, New Jersey, and Connecticut and are permitted to work on Bancroft projects.

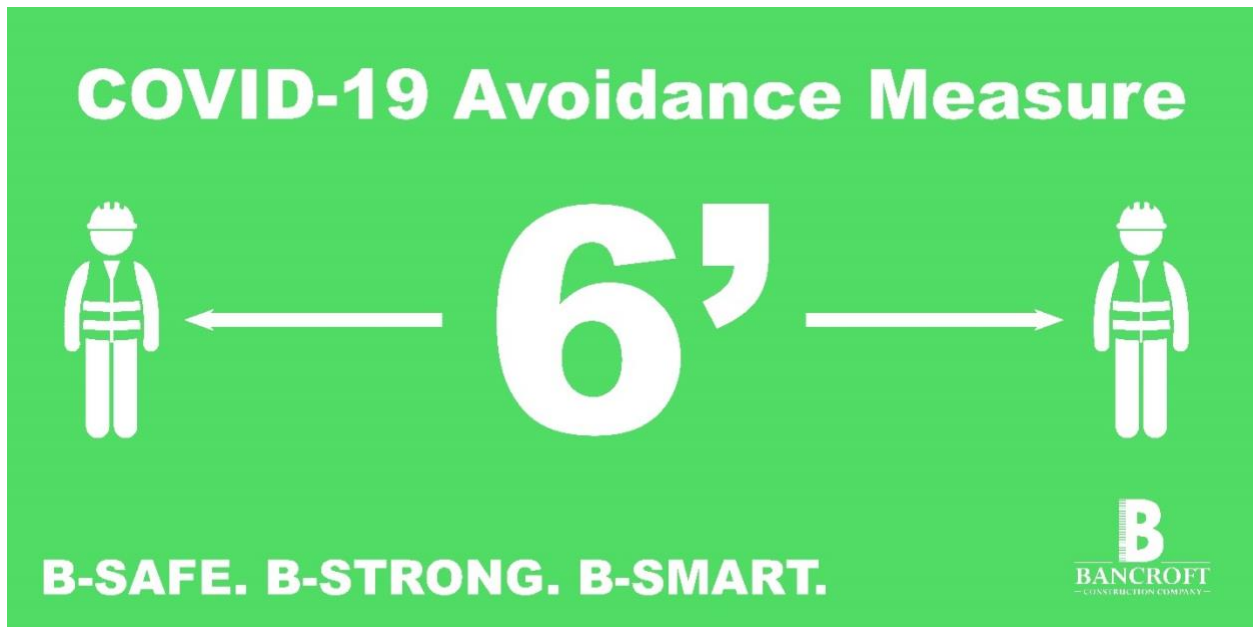
Confirm the employees on our crew today have completed and passed the questionnaire.

Signature

Date

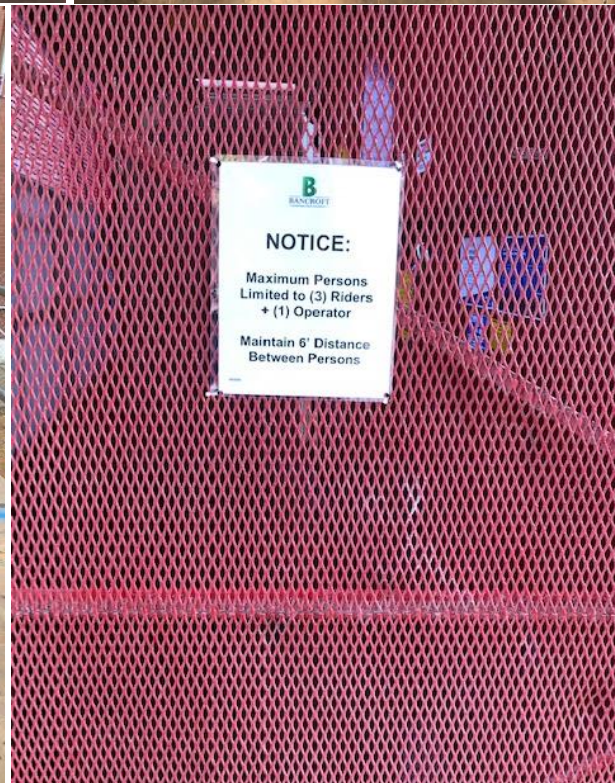
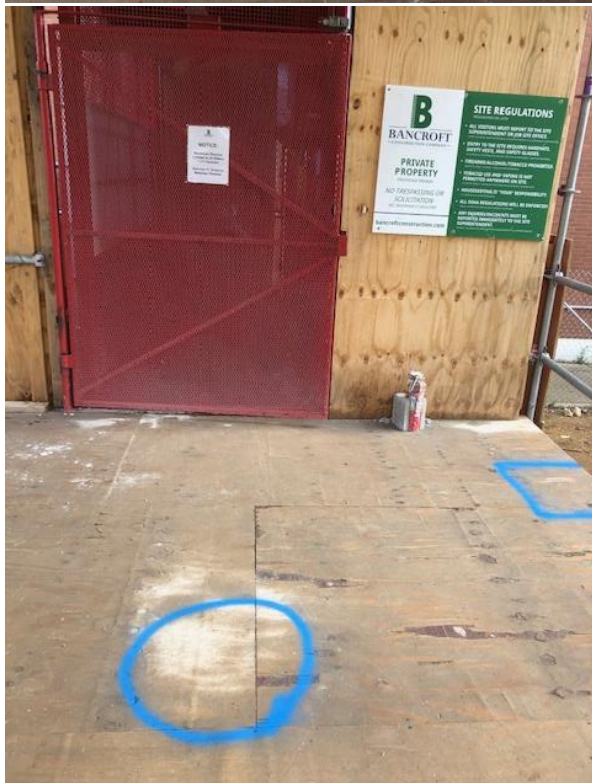
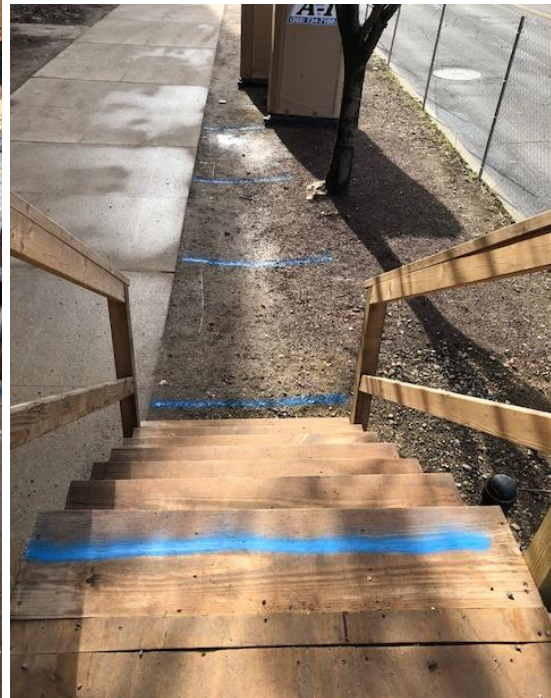
This Certification Form must be transmitted to Bancroft on a daily basis

Bancroft Site Protocols – *Site Signage & Safety Measures:*



COVID-19 Avoidance Measure Signs, like the example above, will be placed in prominent locations on all Bancroft project sites.

Bancroft Site Protocols – Site Signage & Safety Measures (Continued):



State of Delaware: Additional Project Site Protocols

Bancroft Teams, Subcontractors, All Other External Stakeholders

Protocols, we are immediately complying with the Thirteenth Modification of Governor Carney's Executive Order. The mitigation requirements are listed in their entirety, without modification, and we acknowledge the overlap of items compared to the aforementioned Project Site Protocols. If you need additional clarification, please contact your Supervisor.

1. Provide employees with a face covering to wear while working in areas open to the general public and areas in which coming within 6 feet of other staff are likely. Similarly, all restaurants shall require, no later than May 1, 2020 at 8:00 a.m., that all employees who interact with customers (including, without limitation, delivery personnel) to wear a face covering while working. Businesses must provide, at their expense, such face coverings as well as hand sanitizer for their employees.
2. If a customer refuses to wear a face covering for non-medical reasons and if such covering cannot be provided to the individual by the business at the point of entry, then the business must decline entry to the individual, unless the business is providing medication, medical supplies, or food, in which case the business policy should provide alternate methods of pickup and/or delivery of such goods (e.g. bringing the medication to the customer in a parking lot). If an individual declines to wear a face covering on store premises due to a medical condition that inhibits such usage, neither the essential retail business nor its staff shall require the individual to produce medical documentation verifying the stated condition.
3. Businesses shall take steps to remind customers to wear face coverings by (a) posting the requirement at the entrance of the business, and (b) posting clearly visible signs inside the store to remind customers of the requirement to wear the face covering at all times when in the business.

State of New Jersey: Additional Project Site Protocols

Bancroft Teams, Subcontractors, All Other External Stakeholders

Effective Friday, April 10, 2020 at 8:00pm: In addition to the aforementioned Project Site Protocols, we are immediately complying with the additional mitigation requirements described in Executive Order No. 122. The mitigation requirements are listed in their entirety, without modification, and we acknowledge the overlap of items compared to the aforementioned Project Site Protocols. If you need additional clarification, please contact your Supervisor.

1. Prohibit non-essential visitors from entering the worksite.
2. Limit worksite meetings, inductions, and workgroups to groups of fewer than ten individuals.
3. Require individuals to maintain six feet or more distance between them wherever possible.
4. Stagger work start and stop times where practicable to limit the number of individuals entering and leaving the worksite concurrently.
5. Stagger lunch breaks and work times where practicable to enable operations to safely continue while utilizing the least number of individuals possible at the site.
6. Restrict the number of individuals who can access common areas, such as restrooms and breakrooms, concurrently.

7. Require workers and visitors to wear cloth face coverings, in accordance with CDC recommendations, while on the premises, except where doing so would inhibit the individual's health or the individual is under two years of age and require workers to wear gloves while on the premises. Businesses must provide, at their expense, such face coverings and gloves for their employees. If a visitor refuses to wear a cloth face covering for non-medical reasons and if such covering cannot be provided to the individual by the business at the point of entry, then businesses must decline entry to the individual. Nothing in the stated policy should prevent workers or visitors from wearing a surgical-grade mask or other more protective face covering if the individual is already in possession of such equipment, or if the businesses is otherwise required to provide such worker with more protective equipment due to the nature of the work involved. Where an individual declines to wear a face covering on the premises due to a medical condition that inhibits such usage, neither the business nor its staff shall require the individual to produce medical documentation verifying the stated condition.
8. Require infection control practices, such as regular hand washing, coughing and sneezing etiquette, and proper tissue usage and disposal.
9. Limit sharing of tools, equipment, and machinery.
10. Provide sanitization materials, such as hand sanitizer and sanitizing wipes, to workers and visitors.
11. Require frequent sanitization of high-touch areas like restrooms, breakrooms, equipment, and machinery.

State of Pennsylvania: Additional Project Site Protocols

Bancroft Teams, Subcontractors, All Other External Stakeholders

Beginning May 1, 2020, all businesses in the construction industry in the Commonwealth, including those in new construction, renovation, and repair, as well as land subdivision and design-related field activities, are permitted to maintain in-person operations pursuant to the Governor's and Secretary of Health's April 20, 2020 amendments to the Business Closure Orders so long as their activities strictly adhere to this guidance. Construction projects previously granted an exemption to continue in-person operations may continue operations but must adhere to this guidance. Prior to May 1, all businesses in the construction industry should continue to follow existing Administration orders and guidance, and may continue to maintain in-person operations to the extent authorized by any existing exemptions.

POLICY

It is the policy of the Administration to ensure that all businesses in the construction industry subject to this guidance conduct operations in the manner best designed to prevent or mitigate the spread of COVID-19 and ensure the safety of the employers, employees and the public as a whole. All construction businesses authorized to conduct in-person operations in the Commonwealth must adhere to requirements of this guidance, as well as all applicable business and building safety orders issued by the Secretary of Health. Local political units may elect to impose more stringent requirements than those contained in this guidance. In such instances, businesses must adhere to the more stringent requirements. Issued 04-23-20

ALL CONSTRUCTION ACTIVITIES

All businesses and employees in the construction industry must do the following:

- Follow all applicable provisions of the Order of the Secretary of Health providing for business safety measures, issued April 15, 2020, including but not limited to provisions requiring that every person present at a work site wear masks/face coverings, and provisions requiring the establishment of protocols for execution upon discovery that the business has been exposed to a person who is a probable or confirmed case of COVID-19.
- Follow all applicable provisions of the Order of the Secretary of Health providing for building safety measures, issued April 5, 2020.

- Follow other applicable Department of Health (DOH) and Centers for Disease Control and Prevention (CDC) guidance.
- Require social distancing (6-feet minimum distance between workers) unless the safety of the public or workers require deviation (e.g. drywalling, team lifting).
- Provide hand wash stations at appropriate locations on the site such as building entrances, break areas, food truck areas, offices, trailers, and job site egress areas.
- Implement cleaning or sanitizing protocols at all construction sites and projects. Identify and regularly clean and disinfect areas that are at high risk for transmission (requirements to clean common areas and regularly trafficked spaces periodically).
- Ensure all gatherings are limited to no more than 10 people, maintaining 6-foot social distancing, when required to meet, even when conducted outside.
- Use virtual meetings, and disseminate information electronically to the extent feasible.
- Stagger shifts, breaks, work areas and/or stacking of trades where feasible to minimize workers on site.
- Limit tool sharing and sanitize tools if they must be shared.
- Employ jobsite screening based on CDC guidance to determine if employees should work. Prohibit from working any employees with any symptoms of COVID-19. Encourage sick employees to stay home.
- Prohibit unnecessary visitors to any project or work site, and limit supplier deliveries.
- Limit access to enclosed spaces to the extent feasible.
- Ensure workers are traveling to and from the job site separately. Wherever possible employees should not share a vehicle.
- Identify a “Pandemic Safety Officer” for each project or work site, or, if a large-scale construction project, then for each contractor at the site. The primary responsibility of the Pandemic Safety Officer will be to convey, implement, and enforce the social distancing and other requirements of this guidance for the protection of employees, suppliers, and other personnel at the site.

RESIDENTIAL CONSTRUCTION

The Uniform Construction Code (34 Pa. Code § 401.1) defines residential buildings as “detached one-family and two-family dwellings and townhouses which are not more than three stories above grade plane in height with a separate means of egress and their accessory structures.”

- All residential construction projects including new construction, renovation, and repair are authorized to conduct in-person operations; however, such projects may not permit more than four persons on the job site at any time inclusive of employees of both prime and sub contractors, but not inclusive of delivery persons, code inspectors, or similar persons who require temporary access to the site and are not directly engaged in the construction activity. Issued 04-23-20

NON-RESIDENTIAL OR COMMERCIAL CONSTRUCTION

The Uniform Construction Code (34 Pa. Code § 401.1) defines “Commercial construction” as “a building, structure or facility that is not a residential building.” This definition includes multi-unit housing and student housing.

- All commercial construction projects including new construction, renovation, and repair are authorized to conduct in-person operations; however, enclosed projects or portions of enclosed projects, may not permit more than four persons on job sites of 2,000 square feet or less, and
- One additional person is allowed for each additional 500 square feet of enclosed area over 2,000 square feet. These numbers are inclusive of employees of both prime and sub contractors, but not inclusive of delivery persons, code inspectors, or similar persons who require temporary access to the site and are not directly engaged in the construction activity. Enclosed square footage shall include all areas under roof that are under active construction at the time.
- Commercial construction firms, including particularly those managing large-scale construction projects, should consider strongly establishing a written Safety Plan for each work location containing site specific details for the implementation of this guidance to be shared with all employees and implemented and enforced by the designated Pandemic Safety Officer.

PUBLIC CONSTRUCTION

Elected political subdivisions (or “local political units” as described in the Governor’s guidance), and other public entities should continue to use best judgment in exercising their authority to conduct critical construction projects. All construction decisions should appropriately balance public health and safety while ensuring the continued safety of critical infrastructure. When possible, local political units and public entities should postpone non-essential projects and only proceed with essential projects when they can implement appropriate social distancing and cleaning/disinfecting protocols, and should adhere to this guidance on all construction projects.

Local political units and public entities should officially communicate to contractors whether their specific project will be resumed. Notwithstanding any general authorization to resume construction activities, contractors should not resume work on public construction projects until directed to do so by the applicable governmental unit. Certain commonwealth agencies and independent commissions have already issued guidance for critical or essential projects that are continuing. Those specific agency or commission directives should be followed unless there is a direct conflict with these guidelines, in which case these guidelines control. Contractors working on public construction projects must follow construction restart or resumption plans established by that agency or commission.

INSPECTIONS AND APPRAISALS

Beginning May 1, 2020, in-person inspection and appraisals related to construction financing loans, and UCC building code plan review and inspection services may be conducted as necessary for all construction projects authorized under this guidance. Issued 04-23-20

QUESTIONS AND FURTHER GUIDANCE

Businesses that have questions about whether this guidance applies to them may email the Department of Labor and Industry at RA-LIBOIS-BUILDINGS@pa.gov. Answers to frequently asked questions involving application of the Employee Safety Order is available [here](#). Businesses in the construction industry may wish to refer to PennDOT's COVID-19 Guidance for Restarting Construction Projects which provided a process for restarting construction projects that were suspended in response to COVID-19 mitigation. The guidance is available [here](#). Help is available for people who are struggling with their mental or emotional health or feeling anxious or overly stressed contact the Crisis Text Line by texting PA to 741-741.

ENFORCEMENT

Enforcement actions against violators of the Governor's and Secretary of Health's Orders Closing Businesses That Are Not Life Sustaining commenced on March 23, 2020, and is ongoing. Law enforcement officers should refer to Enforcement Guidance available online [here](#).

ADDITIONAL INFORMATION

For the most up-to-date, reliable information, please continue to refer to the Commonwealth of Pennsylvania's website for Responding to COVID-19 in Pennsylvania: <https://www.pa.gov/guides/responding-to-covid-19/>.

State of Maryland: Additional Project Site Protocols

Bancroft Teams, Subcontractors, All Other External Stakeholders

Order of the Governor of the State of Maryland, Number 20-03-23-01, dated March 23, 2020, Amending and Restating the Order of March 19, 2020, Prohibiting Large Gatherings and Events and Closing Senior Centers, and Additionally Closing All Non-Essential Businesses and Other Establishments At this time, the Office of Legal Counsel recommends that the Administration interpret the above referenced Order as follows:

1. Not a Shelter-in-Place Order - The Order is not a shelter-in-place order. However, all Marylanders are urged to remain home, and employers are urged to promote work-from-home arrangements to the greatest extent possible.
2. Businesses, Organizations, and Facilities That May Remain Open. The following is a nonexhaustive list of businesses, organizations, and facilities that are included in the federal critical infrastructure sectors. The Order does not require these businesses, organizations, and facilities to close.
 - a. **The Chemical Sector** includes, but is not limited to:
 - i. Pharmaceutical manufacturers.
 - ii. Chemical manufacturers.
 - iii. Distributors of chemicals and pharmaceuticals.
 - b. **The Commercial Facilities Sector** includes, but is not limited to:
 - i. Lodging.
 - ii. Building and property maintenance companies, including without limitation plumbers, electricians, HVAC service companies, roofers, environmental services companies, exterminators, arborists, and landscapers.
 - iii. Janitorial firms.
 - iv. Companies that sell supplies and materials for maintenance of commercial and residential buildings, including “big box” home improvement supply stores, plumbing distributors, electrical distributors, and HVAC distributors.
 - v. Laundromats, dry cleaners, and laundry services.

- vi. Commercial and residential construction companies.
- vii. Self-storage facilities.

Please note: Casinos, racetracks, simulcast betting facilities, enclosed malls, certain recreational establishments, and certain retail businesses are subject to specific provisions of this and other Orders, and are required to close. Please read the Order carefully.

c. The Communications Sector includes, but is not limited to:

- i. Broadcasting companies and stations.
- ii. Cable TV companies.
- iii. Telephone (cellular and landline) companies.
- iv. Internet service providers.

d. The Critical Manufacturing Sector includes, but is not limited to, manufacturing of:

- i. Steel, iron, and aluminum products.
- ii. Engines, motors, turbines, generators, and power transmission equipment.
- iii. Earth-moving, mining, agricultural, and construction equipment.
- iv. Parts for water, electric, and telecommunications utility infrastructure.
- v. Land, air, and water vehicles, and related parts.
- vi. Medical equipment.
- vii. Personal protective equipment.
- viii. Cleaning and sanitation equipment and supplies.

e. The Defense Industrial Base Sector includes, but is not limited to:

- i. Companies that research, develop, manufacture, or integrate weapons, defense, or intelligence systems or assets.
- ii. Private contractors that support defense and intelligence agencies.

f. The Emergency Services Sector includes, but is not limited to:

- i. Law enforcement.
- ii. Emergency medical services.
- iii. Emergency management.
- iv. Fire and rescue services.
- v. Private ambulance companies.

g. The Energy Sector includes, but is not limited to:

- i. Companies engaged in electricity production (excluding hydroelectric and nuclear, which are included in other sectors).
- ii. Companies engaged in the production, refining, storage, transportation, distribution, and sale of oil, gas, and propane products, including gas stations and truck stops.
- iii. Companies that provide utility maintenance services.

h. The Financial Services Sector includes, but is not limited to:

- i. Banks and credit unions.
- ii. Non-bank lenders.
- iii. Payroll processing companies.
- iv. Payment processing companies.
- v. Armored car companies.
- vi. Insurance companies.
- vii. Securities and investment companies.
- viii. Accounting and bookkeeping firms.

i. The Food and Agriculture Sector includes, but is not limited to:

- i. Grocery stores.
- ii. Farmer's markets.
- iii. Convenience stores.
- iv. Alcoholic beverage stores and distributors, distilleries, and wineries.
- v. Institutional food service and supply companies.
- vi. Farms.
- vii. Food manufacturing and processing.
- viii. Pet supply stores.
- ix. Veterinary hospitals, clinics, and kennels.
- x. Companies that manufacture, maintain, and sell agricultural equipment.
- xi. Companies that manufacture, or support the manufacturing of paper products.

Please note: Restaurants and bars are subject to specific provisions of the Order, and are required to close (except for carry-out, delivery, and drive-through sales). Please read the Order carefully.

j. The Government Facilities Sector also encompasses private persons and entities that support the judicial system.

- i. Lawyers and law firms.
- ii. Court reporters.
- iii. Bail bondsmen.

k. The Healthcare and Public Health Sector includes, but it not limited to:

- i. Hospitals.
- ii. Healthcare systems and clinics.
- iii. Offices of health care providers, including physicians, dentists, and pharmacists.
- iv. Physical, occupation, and speech therapists.
- v. Behavioral health facilities and professionals, including psychologists, mental health counselors, and substance abuse counselors
- vi. Rehabilitation facilities.
- vii. Diagnostic facilities, including radiology, imaging, and laboratory facilities.
- viii. Health plans, payors, and billing companies.
- ix. Funeral homes and crematoriums.
- x. Senior living facilities, including independent living, assisted living, and skilled nursing.
- xi. Manufacturers and distributors of medical equipment and supplies.
- xii. Medical cannabis growers, processors, and dispensaries.
- xiii. Home health care companies.
- xiv. Pharmacies.

l. The Transportation Systems Sector includes, but it not limited to:

- i. Airlines and operators of commercial aircraft (manned and unmanned).
- ii. Airports, air strips, heliports, and seaplane bases.
- iii. Railroads.
- iv. Motor carriers.
- v. Carriers of marine freight, including ocean carriers and inland carriers.
- vi. Marine, rail, truck, and intermodal terminals, and operators thereof.

- vii. Stevedores, longshoremen, baggage handlers, and others who handle cargo at transportation hubs.
 - viii. Courier, package delivery, mail service, and mail management companies.
 - ix. Warehousing and distribution companies.
 - x. Pipeline owners, operators and maintenance companies.
 - xi. Lessors of transportation assets, including railcars and truck trailers.
 - xii. Companies that supply parts, or provide maintenance and repair services for transportation assets and infrastructure, including aircraft, marine vessels, locomotives, rail cars, trucks, buses, cars, heavy equipment, roads, bridges, tunnels, airports, air strips, marine terminals, railroads.
 - xiii. Automotive supply stores and repair shops.
- m. The Water and Wastewater System Sector includes, but it not limited to:
- i. Municipal, community, and other drinking water and wastewater systems and facilities.
 - ii. Well drillers.
 - iii. Companies that provide maintenance and inspection services for water and wastewater assets, including treatment works, residential water treatment systems, piping, pumps, tanks, drains, conveyances, and monitoring systems.
 - iv. Water testing companies.
- n. Supporting Firms:
- i. Staffing and/or payroll services.
 - ii. Essential raw materials, products, or services.

3. Door-to-Door Solicitation. Door-to-door solicitation (even by businesses that are permitted to remain open) is likely to violate social-distancing guidelines and should be discontinued.

The list in #2 above is non-exhaustive. The fact that a particular business, organization, or facility is not included in the list does not mean it is excluded from the federal critical infrastructure sectors. Please consult <https://www.cisa.gov/identifying-critical-infrastructure-during-covid-19> for additional guidance about what is and is not included in the federal critical infrastructure sectors.

Additional COVID-19 Related Resources:

AGC Coronavirus Website

<https://www.agc.org/coronavirus>

CDC Coronavirus Website

<https://www.cdc.gov/coronavirus/2019-ncov/index.html>

Cigna Coronavirus Resource Center

https://www.cigna.com/coronavirus/?Lead_Key_ID=211961319177

CDC Print Resources

<https://www.cdc.gov/coronavirus/2019-ncov/communication/factsheets.html>

Bancroft Resources / Points of Contact:

Dave Hatfield
Safety Manager
Wilmington DE Office
(302) 420-3798
dhatfield@bancroftusa.com

John Patti
Safety Manager
Princeton NJ Office
(609) 319-2398
jpatti@bancroftusa.com

Larry Carroll
Field Operations Manager
(302) 299-9867
lcarroll@bancroftusa.com